



SWINDON TOWN

football club



official
programme 6d

furniture & furnishings

of charm and distinction . . .
carpets floor coverings loose
covers curtains skilled workshop
repair service . . .

furnishing contractors
to:
government departments
hospitals hotels
schools factories
offices . . .

Our fully trained and
experienced staff
can deal promptly
and efficiently
with any furnishing
problem



mills+merricks

established over 65 years

ltd

16/17 Bridge Street Swindon phone 5365/6

SWINDON TOWN FOOTBALL COMPANY LIMITED

Registered Office: COUNTY GROUND, SWINDON

Directors:

Mr. W. J. CASTLE (Chairman) Mr. H. E. LANE (Vice-Chairman)
Messrs. F. L. COLLINGS, A. W. DONE, M. EARLE, R. FRICKER, C. J. GREEN,
F. PLYER, H. WILLIAMS and K. H. WILMER.

Manager: D. WILLIAMS.

Secretary: R. MORSE.

VOL. 18

SATURDAY, 3rd FEBRUARY, 1968

No. 18

SATURDAY, 3rd FEBRUARY, 1968

DIVISION III

SWINDON TOWN

v.

WALSALL

Kick-off 3 p.m.

REFEREE:

MR. B. H. DANIELS (Rainham)

LINESMEN:

Red Flag—MR. K. H. LIMBIRD (Stourbridge)

Yellow Flag—MR. J. GRIFFITHS (Witney)

The Borough Stationers

6 Commercial Road Swindon

For all office stationery

Backed by the resources of the
Borough Press

The most comprehensive stock in the District

Meet your friends for an enjoyable evening at

THE KINGSDOWN ARMS

(Host A. W. Vann)

FULLY LICENSED - ARKELL'S BEERS
SNACKS - Etc.

STRATTON ST. MARGARET

Tel. 3283

WILSONS (SWINDON) LTD.

BUILDERS OF MODERN ATTRACTIVE
HOUSES AND BUNGALOWS

Developments at:
Upper & Lower Stratton — Blunsdon & Highworth

HEAD OFFICE:

90/91 COMMERCIAL ROAD - SWINDON

Telephone Swindon 6361/3

NEWS and VIEWS

Today we play a very vital game, it could prove to be the most important of the season. A win for either side would literally mean four points. Earlier in the season — 23rd September, 1967 — we were narrowly defeated 2—3 at Walsall. The half-time score was 0—2, but Swindon staged a great rally, and levelled the score through goals by Harland and Rogers. Unfortunately in the closing minutes Walsall scored a third and winning goal.

Swindon: Jones; Thomas, Trollope; Butler, Nurse, Harland; Heath, Penman, Terry, Smart, Rogers.

Last season on 18th October, 1966, Swindon drew 1—1 at Walsall to begin a fine run in the League, which lasted until the end of December.

The team on that occasion makes interesting reading: Hicks; Thomas, Trollope; Smart, Nurse, Harland; Rogers, Brown, East, Butler, Walker.

The return fixture on Tuesday, 18th April, 1967, produced one of the best games seen on the County Ground last season, and that includes the famous cup matches. Strangely enough it was Walsall who made the fine fight back. Swindon played grand football in the first half, and led by three goals to nil. Rogers scored in twenty-three minutes after a fine run; Terry scored with a wonderful shot from a corner by Walker in the twenty-ninth minute. The third, a penalty by Rogers, came a minute before half-time.

Then Walsall really brought the game alive. Taylor headed in from a corner in the sixty-eighth minute. Four minutes later a wonderful shot by Baker reduced the deficit to one goal. Then ensued a tense struggle, but the score remained the same. Nevertheless a fine game which pleased all present.

Swindon (3): Downsborough; Thomas, Trollope; Morgan,

Come Co-operative Shopping



FOR
THE BEST
IN
MEN'S
WEAR

**SWINDON AND DISTRICT CO-OPERATIVE SOCIETY
6 FLEET STREET, SWINDON**

NEWS AND VIEWS—continued

Nurse, Harland; Rogers, Penman, Terry, Smart, Walker.
Sub.: Dawson.

Scorers: Rogers (2), Terry.

Walsall (2): Ball; Hill, Evans; Simpson, Bennett, Atthey;
Jackson, Baker, Kirby, McMorran, Taylor.

Scorers: Taylor, Baker.

Referee: Mr. A. Dimond (Harlow).

Attendance: 14,459.

I wonder if we shall reach that figure today after last week's 20,900? This game is really more important than the cup-tie. It could almost decide promotion.

Much was written last week-end regarding a communication sent to League clubs by the Management Committee. It simply advised, or asked, clubs to withdraw their Press facilities from representatives of a Sunday paper, in view of articles which appeared in that paper.

The League Management Committee is an important body, which spends hours (in many cases giving up their leisure time) on serious business. When such a body issues a statement it must be respected, as no doubt the matter was fully investigated.

Many sports writers were against the League Committee. One, while damning the action of the League wrote of the articles: "They were neither illuminating, entertaining nor designed to improve the public image of the professional footballer." That surely is the point. "One bad apple can spoil the barrel", as the saying goes. Such is this case. Not only does it spoil the image of the footballer, but also the Clubs and football in general.

Our friend Danny Blanchflower, a player of long-standing, who we feel sure would not like the image spoiled, writes against the League, and also says: "Most administrators are in football for prestige — they chase a public spotlight. There's

Tel: Swindon 5884

W. J. SELWOOD

Saddlery

General Leather Goods Manufactured
and Repaired to Your Individual
Requirements

103 BROAD STREET
SWINDON WILTS

Always at your service

L. BIBBY

For all Types—Rags, Iron and Metal,
etc. Spot Cash Paid. Please Tel. 2101
and our van will call.

THE PADDOCK, ERMIN STREET
STRATTON ST. MARGARET

★ Cedarwood Sheds ★

★ Workshops and Greenhouses ★

Made locally by

H. R. SPACKMAN

SHRIVENHAM ROAD - SWINDON - WILTS

Telephone Swindon 4458

WISES CATERING SERVICE

(Reg. Wise)

Our Caterer for the past 19 seasons
Guarantees

**A GOOD CUP OF TEA AT THE
COUNTY GROUND**

A full range of Sweets & Cigarettes
at any of our five kiosks on your
way in. **ENJOY YOURSELF**

Warnes Rentals

To be sure!

51 Commercial Road,
SWINDON

Tel: 6486

NEWS AND VIEWS—continued

nothing wrong with that, but they would do well to understand that sometimes the spotlight will be badly focussed, and the game will be seen in a bad light." In my experience, men in football are modest, dedicated men who shun publicity. It's the Press who chase them, put the spotlight on them and wish to obtain statements. Those who do not respond are often treated badly by the Press. Usually the quietest and less verbose men in football are the best. The finest example is the English manager — Sir Alfred Ramsay.

The important point to me is that the writers so often make up their minds on other people's opinions. They can make or mar a player, and frequently one reads of players doing well or badly when, in the view of many at that game, the reverse should apply. Invariably it's the man in the limelight who gets the praise.

We used to say to be noted a player had to have some mannerisms, or differ in stature. For example to be bald, have fair hair or run in a peculiar manner. It is perfectly true. Every time a man with a bald head touches the ball he is noticed. That does not apply today in International circles, where a squad of forty is called for training.

However, to come back to the matter in hand. It is surely up to everyone to applaud and support the Football League Management Committee in it's efforts to make football a great profession, and one to which every player should consider it an honour to belong.

The draw for the Fourth Round did not favour Swindon. However we shall go to Sheffield with every confidence, after our experiences of last season. Hillsborough — home of Sheffield Wednesday — is a magnificent ground, which was used for World Cup matches. There are Stands on three sides of the ground. One of these alone, holds 10,000 seats, and not an upright to obstruct the view. There should be tickets for all

Swindon Sports Centre

FOR ALL YOUR SPORTS EQUIPMENT & SPORTS CLOTHING

Largest range of Football Boots, Adidas, Mitre, Lawrence,
Wint, Pocock etc.

Supporters Club Scarves, Rattles etc. Send for Winter Catalogue.

23 COMMERCIAL ROAD, SWINDON

Telephone: 4270

Suppliers to Swindon Town A.F.C.

Maylott Studios

For **GROUP & SPORT** Photographs

Official Photographer to
Swindon Town Football Club

31 FARINGDON ROAD
TEL. 22792

Notton's Cafe

COUNTY ROAD

200 yards from Ground

—————
PERFECT MEALS AT ALL TIMES

L. Wollen

OFF LICENCE

WINES and SPIRITS

Arkell's Ales and Stout

373 Cricklade Road, Swindon
Deliveries Daily Phone 3508

C. DUNN & SON

Builders & Decorators

Alterations, Renovations,
Conversions, Plumbers &
Sanitary Engineers

503 CRICKLADE RD. Tel. 22522

W. COLLINS (Swindon) LTD.

TURF ACCOUNTANTS

69 COMMERCIAL ROAD - SWINDON

TEL. 21371

AND AT THE GREEN, LYNEHAM

NEWS AND VIEWS—continued

our supporters who wish to make the journey. We shall not be lacking support, and our lads will really enjoy playing on such a fine ground against a grand footballing side.

Swindon has lost another of its oldest supporters — Mrs. Adeline Loveday — known to all of our players a few years ago as “Addy”. She was the mother to many a young player, and her home in Shrivenham Road was the rendezvous of most of the professional staff. Apart from taking three or four as boarders it was open house. Many players have much for which to thank her, and how they appreciated “Addy” and her cooking. Remember George Morrall and Stan Wilcockson before the war? Neil Harris, Mrs. Harris and Johnny Harris (manager of Sheffield United). Later in the fifties George Gray, Peter Hilton, Peter Chamberlain and Maurice Jones. They were proud to be numbered among her friends. She was a great asset to the Club, for when lodgings were difficult to find, Mrs. Loveday would always find room somehow for a new player. We extend to her son and two daughters the sympathy of all connected with the Club. Many thanks “Addy” for the happy times.

LAST WEEKS MATCHES

F.A. CUP TIE THIRD ROUND

Saturday, 27th January, 1968.

Beat BLACKBURN ROVERS (Home) 1—0.

Team: Downsborough; Thomas, Trollope; Butler, Nurse, Harland; Heath, Penman, Terry, Smart, Rogers. Sub: Dawson.

Scorer: M. Nurse.

Referee: Mr. D. J. Lyden (Birmingham).



W. J. CASTLE

Office and Bakery:

4 and 5 MARKET STREET

SWINDON

Telephone 22017

Specialists

BIRTHDAY CAKES - WEDDING CAKES

DAIRY CREAM - PASTRIES

BUNS - ROLLS - SPONGES

Do not let **CHILBLAINS** spoil a good game



RELAPERNE

Price 2/6 from your CHEMIST

2/10 Post Paid from

BALLARD & CO. (CHEMISTS) LTD.

FARINGDON - BERKS

OUR VISITORS



WALSALL FOOTBALL CLUB LTD.

NICK ATHEY (Wing-half)

Nick was signed as apprentice professional on leaving school and became a full professional in 1963. Small in stature he is noted for his non-stop power-house performances. Born in Tantobie, Newcastle-on-Tyne.

ALLAN BAKER (Inside-forward)

A much sought after Schoolboy International. Allan was signed from Aston Villa in 1966. A neat, deft player, controlling the ball with quicksilver accuracy, he is also at home on the wing. Born in nearby Tipton.

KEITH BALL (Goalkeeper)

Keith, born in Walsall, first signed for the Saddlers as an amateur in 1957 and became a professional in 1959. Transferred to Worcester City in 1962 he returned to the Saddlers in 1965.

STAN BENNETT (Centre-half)

A Birmingham boy who served his apprenticeship with the Saddlers. Stan seized his chance when Trevor Smith, the Club's International centre-half was seriously injured. A dedicated, whole-hearted player.

MICK EVANS (Full-back)

A West Bromwich boy, Mick is another home-grown product who signed amateur forms in 1963 and became a full professional in 1964. Strong and fearless, he deputised for John Harris, the team captain, who was seriously injured at the commencement of last season.

FRANK GREGG (Full-back)

Frank won the "Player of the Season" award last season. Another product of the Saddlers' Nursery he became a full professional in 1961. A sturdy, intelligent player, born in Wordsley, near Stourbridge.

GERRY HARRIS (Full-back)

Born in Claverley, near Wolverhampton, Gerry came to the Saddlers in 1966 after some years of experience with Wolverhampton Wanderers. He made a limited number of appearances last season due to injuries.

TREVOR MEATH (Wing-half)

Another local boy signed from Darlaston as a professional in 1964. Trevor is a powerful player, well-built and strong in the tackle. Always ready to join in the attack.

"A FAMOUS NAME IN ROSES"

GREGORY'S ROSES

STAPLEFORD NOTTINGHAM

An agent for Rose Trees grown by Gregory's of Nottingham.

All bushes are guaranteed and will be replaced if fail to bloom.

Discount on quantities over £2.

For catalogues and details apply:-

**K. M. CLARKE, THE WHITE HOUSE, EASTROP,
HIGHWORTH, WILTS.**

Telephone: Highworth 322

**G. H. FLOWER & SON LIMITED
WOOD LANE, CHIPPENHAM**

LICENCE No. S.2802

PHONE 2017

SCRAP METAL

and

GENERAL WASTE SALVAGE DEALERS

Plant dismantling carried out

Members of

National Association of Non-Ferrous Metal Merchants

THE PORK SHOP

(Swindon Bacon Curing Co. Ltd.)

Specialists in

BACON - PORK - COOKED HAM

50 FLEET STREET - SWINDON

TEL: 22122

OUR VISITORS—continued

JOHN HARRIS (Full-back)

John, an Under-23 International and normally the captain of the team, was an absentee through injury last season and is hoping for a come-back. A particularly experienced player with an uncanny positional sense he was signed from Wolverhampton Wanderers in 1965. Born in nearby Upper Gornal.

ALEC JACKSON (Winger)

Alec was signed in February last year from Birmingham City with whom he had considerable 1st and 2nd Division experience. Also fills an inside-forward spot with distinction. Born in nearby Tipton.

BOB WESSON (Goalkeeper)

Bob was signed from Coventry City in September 1966. He made some 150 First XI appearances for the Sky Blues. Born in Thornaby-on-Tees.

HARRY MIDDLETON (Inside-forward)

Harry was signed from Mansfield Town in March 1966 to replace Alan Clarke who had been transferred to Fulham for a record fee. He has had a wealth of experience with several clubs including Wolverhampton Wanderers and Portsmouth. Born in Birmingham.

JIM McMORRAN (Inside-forward)

A Schoolboy and Scottish Youth International who prefers the roll of goal-maker but no mean shot. Jim joined the Saddlers from Third Lanark after previously serving Aston Villa. A native of Muirkirk, Scotland.

JIM MURRAY (Centre-forward)

Previously serving Wolverhampton Wanderers and Manchester City, Jim joined the Saddlers at the end of last season. An experienced player and prolific goalscorer. Born in Dover.

TERRY SIMPSON (Wing-half)

The attacking type of wing-half. Terry, after considerable experience with West Bromwich Albion joined the Saddlers in March 1967. Born in Southampton.

COLIN TAYLOR (Winger)

The one remaining member of the team which took the Saddlers from the 4th to the 2nd Division in successive seasons. Colin joined the Saddlers from nearby Stourbridge in 1958. After being transferred to Newcastle United he returned in 1964. Particularly well known for his terrific shot. A native of Stourbridge.

BRETTS

PET AND GARDEN SUPPLIES

32-33 Commercial Rd.
Swindon

6 Cromwell St.
Swindon

Electric Shaver Specialists

Repairs, spares, 8 hour servicing for all makes.
Full range of new shavers. Reconditioned shavers.
Part exchanges. Agents for "Executive" shavers.

BARBER SHOP

117 MANCHESTER ROAD, SWINDON

Telephone: 3131

FOR ALL YOUR ANGLING NEEDS
CONSULT

FRANK WOODWARD

Swindon's Fishing Tackle Specialist

25 HAVELOCK ST., SWINDON
PHONE 3879

For Paints of Good Quality

H. S. HODGES & SONS (SWINDON) LTD.

CRICKLADE RD., SWINDON
PHONE 22422

Dulux, Brolac, Valspar, Wallcharm,
etc.

SOUTHERN LAUNDRY CO. LTD.

Launderers and Dry Cleaners

HAYDON ST. - SWINDON
TELEPHONE 4161

The Advertisers in this
programme have supported
the Club. Will you help us
reciprocate by supporting
them whenever possible?

International Football League Match

The Football League v. The Scottish League

at Ayresome Park, Middlesbrough

on Wednesday, 20th March, 1968

Kick-off 7.30 p.m.

.....
Tickets in advance for this match will be available
from

“The Secretary”,
Middlesbrough Football Club,
Ayresome Park,
Middlesbrough, Yorks.

as follows:—

Reserved seats

Centre Stands 12/6

Wing Stands 10/-

Terrace Seats 8/6

East End Seats 7/6

Applications for tickets should be accompanied by
remittance and stamped addressed envelope for
return of tickets.

Admission to South Paddock 5/-; Ground 4/6

(Boys 2/-); will be by cash at the turnstiles.

Hatton's Newsagency

A. J. D. & N. J. Woodhouse

**Newsagents :: Tobacconists
Confectioners**

Agents for Wessex School of
Motoring

Booking Agents for Rimes Coaches

6 Regent Circus (near G.P.O.)

Telephone Swindon 22731

HULFORD MOTORS Ltd.

SELF DRIVE HIRE

Fleet of 1968 Fords
Anglias De-Luxe - Cortinas
De-Luxe - Zephyr V4

SHRIVENHAM ROAD

(200 yards from Football Ground)

Phone 4934

Large Car Park available

For High Class
Central Heating. Plumbing
Painting and Decorating
Electrical Installations
and Repairs

**NORTH WILTS
Sanitary & Heating
Co. Ltd.**

NEWPORT ST., SWINDON

Phone 5373/4

**your savings
are safe and
sound in ...**

MEMBER OF THE BUILDING
SOCIETIES ASSOCIATION

BRISTOL BUILDING

Swi
BRISTOL & WEST HOU

SWINDON TOWN

Downsborough

Thomas (2) Trollop

Butler (4) Nurse (5)

Heath (7) Penman (8) Terry (9)

KEEP IN TOUCH

EVENING

ADVERTISER

WITH THE NEWS

Swindon's 12th Man
Noble

Taylor (11) Jackson (10) Clarke (9)

Atthey (6) Bennett (5)

Harris (3) Gregg

Wesson

WALSALL

Mills & Merric

Complete House Furni

Furnishing Contra

16-17 BRIDGE STREET, SWINDON.

BRISTOL & WEST BUILDING SOCIETY

Swindon Office:

BRISTOL & WEST HOUSE, REGENT CIRCUS, SWINDON

SWINDON TOWN

Downsborough

as (2) Trollope (3)

Nurse (5)

Harland (6)

Terry (9)

Smart (10)

Rogers (11)

KEEP IN TOUCH
EVENING
ADVERTISER
WITH THE NEWS

These teams are subject
to alteration

Walsall's 12th Man

Clarke (9)

Baker (8)

Watson (7)

Bennett (5)

Simpson (4)

ris (3) Gregg (2)

Wesson

WALSALL

Merricks Ltd.

House Furnishers and

Fishing Contractors

SWINDON.

Tel: 5365/6

McILROY'S RESTAURANT

Banqueting & Ballroom

for morning coffee,
luncheon and
afternoon tea - in
pleasant surroundings -
you will find McIlroys
are top of the
'league'. For all
occasions.

Fully Licenced. Parties and
Functions catered for.

McIlroys Restaurant

64-72 Regent Street

Tel. 5294



THE ALCOHOL FUEL

COATE GARAGE

REPAIRS - OVERHAULS - WELDING
SERVICING - REBORING - TYRES

Props. E. V. & W. H. Mattick
Marlborough Rd., Swindon

KEY OF THE BOARD

First Section

- A—Burnley v. Wolverhampton Wanderers
- B—Chelsea v. Nottingham Forest
- C—Everton v. Liverpool
- D—Leicester City v. Leeds United
- E—Manchester City v. Arsenal
- F—Newcastle United v. Sheffield United
- G—Sheffield Wednesday v. Sunderland
- H—Southampton v. Stoke City
- I—Tottenham Hotspur v. Manchester United
- J—West Bromwich Albion v. Coventry City
- K—West Ham United v. Fulham
- L—Birmingham City v. Blackpool
- M—Bolton Wanderers v. Blackburn Rovers
- N—Bristol City v. Millwall
- O—Charlton Athletic v. Queen's Park Rangers
- P—Crystal Palace v. Aston Villa
- Q—Derby County v. Cardiff City
- R—Huddersfield Town v. Carlisle United
- S—Middlesbrough v. Hull City
- T—Norwich City v. Ipswich Town

Second Section

- A—Preston North End v. Plymouth Argyle
- B—Rotherham United v. Portsmouth
- C—Brighton & Hove Albion v. Orient
- D—Colchester United v. Bournemouth & Boscombe Athletic
- E—Mansfield Town v. Oxford United
- F—Peterborough United v. Bury
- G—Reading v. Gillingham
- H—Torquay United v. Grimsby Town
- I—Watford v. Barrow
- J—Bradford City v. Halifax Town
- K—Crewe Alexandra v. Lincoln City
- L—Hartlepool United v. Wrexham
- M—Notts County v. Workington
- N—Rochdale v. Doncaster Rovers
- P—York City v. Luton Town



throughout the West

you will find Bradley Estates beautifully situated to meet the requirements of modern living. If you are thinking about a new home and would like to receive full details of our current and planned estates write now to 74 Victoria Road Swindon Wiltshire. Please send me details of

- Green Meadow Estate, Swindon, Wiltshire
- Nythe Estate, Swindon, Wiltshire
- Monkton Park Estate, Chippenham, Wiltshire
- Park Hill Estate, Frome, Somerset
- Milldown Estate, Blandford Forum, Dorset
- Southwick Estate, Trowbridge, Wiltshire
- Estates planned for Poole, Dorset

Name

Address



BRADLEYESTATES

SUPPORTERS *CLUB NOTES*

The cup-tie against Blackburn Rovers proved a thriller. Maybe a long Cup run is viewed with mixed feelings by the Club management, but there is no doubt that cup-ties bring back the missing "regular" supporters for the big game. Now we hope the missing thousands will retain the interest until the end of the season. The increased support will spur on the team, and the increased gate money will enable the Club to look for better players. Too many "supporters" want money to be spent without being prepared to take a part in providing the said lolly, by attending regularly.

The Supporters' Club football team failed to win the double against Portazan last Sunday morning, and lost by 3—2. A measure of the game can be given when I report that both goalkeepers were kept in action, and there were many fine saves. Having got into the lead in the second half, Portazan proved a little bit sharper in going for the ball. Nevertheless, the last ten minutes could easily have provided the equaliser. The League leaders, Akers, beat the Social Club 9—0.

The Social Club had a busy cup-tie, with quite a number of Blackburn supporters, before the match. They didn't help us to celebrate. In their place a party of Liverpool supporters, on their way back from Bournemouth, paid a second visit, as they dropped in after their away match at Southampton earlier in the season. Sure of a welcome, they intend to drop in whenever they are down our way.

The next round of the Cup sees the Robins chirping against Sheffield Wednesday. Danny Williams tells me that, with approximately 6,000 seats available to Supporters, anyone going to the match can almost be assured of a seat. In the event

Suppliers to the Swindon Team

MAY WE SUPPLY YOU?



EARLE

of Chippenham Limited

MAIN

FORD

DEALERS

COCKLEBURY ROAD - CHIPPENHAM

Telephone 3255

SUPPORTERS' CLUB NOTES—continued

of a replay, if the Board decides on an all ticket match, supporters who were members before 2nd December (inc.) will obtain them at a special turnstile at the same time as tickets are being sold by the Football Club. As this is the last programme before then, supporters should watch for Press information for details.

Special Note: All tickets for the Sheffield Wednesday away cup-tie will be handled by the Football Club.

Today's visitors, Walsall, are promotion rivals. Naturally, we all look forward to two more extremely valuable points. Walsall supporters may like to visit the Social Club before or after the match — hot meals and snacks are available. The photograph of the Club bar may help to entice them, and also encourage Swindon supporters who are not members to join.

Tonight's Party night sees the welcome return of **Ken Kitching** and his band — always popular music makers. Tomorrow (Sunday 4th) the entertainers, after Bingo, will be **The Master Sounds**. Next **Saturday**, music will be by the **Merve Gilbert Quartette**, and on Sunday, 11th, the **Swinging Shepherds** return again.

Preliminary Notice: The Supporters' Club Annual Dinner and Dance will be held in McIlroy's Ballroom, on Wednesday, 13th March. Dining and Dancing to the Dal Combo. Full details in our Notes in the next programme, 17th February, or earlier if any Cup replay.

... not just concrete, but

Premix

SWINDON AREA OFFICE c/o COLN GRAVEL CO. LTD.
CLAYDON PIKE LECHLADE GLOS.

PHONE LECHLADE 461/2

Premix—an Amey company—serves 21 counties



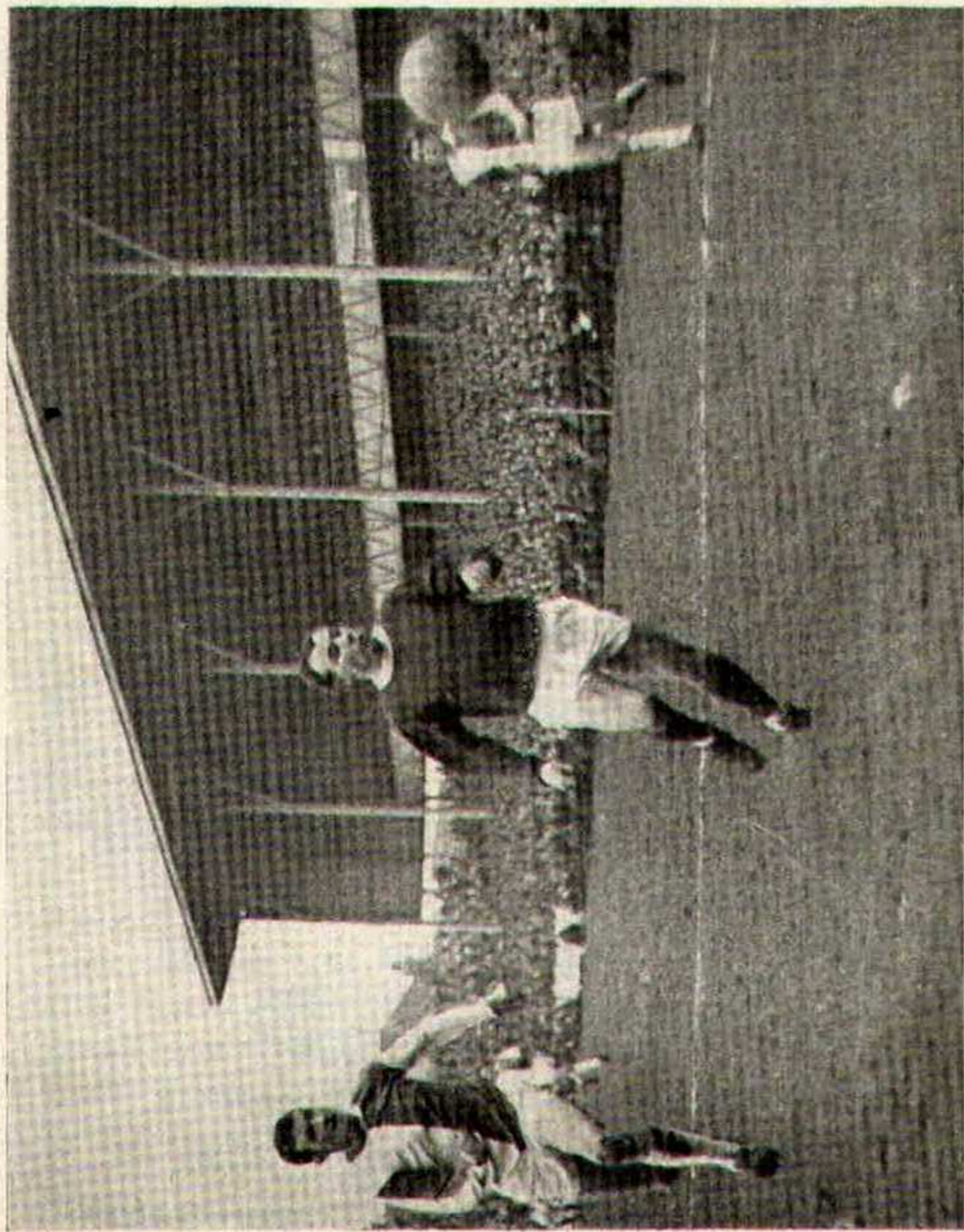
CLARK BROS. (Swindon) Ltd.

Building and Civil Engineering Contractors

CONSULT US FOR
BUILDING AND CIVIL ENGINEERING
CONSTRUCTION IN ALL ITS PHASES

STRATTON ROAD
SWINDON

Telephone
Swindon 27261

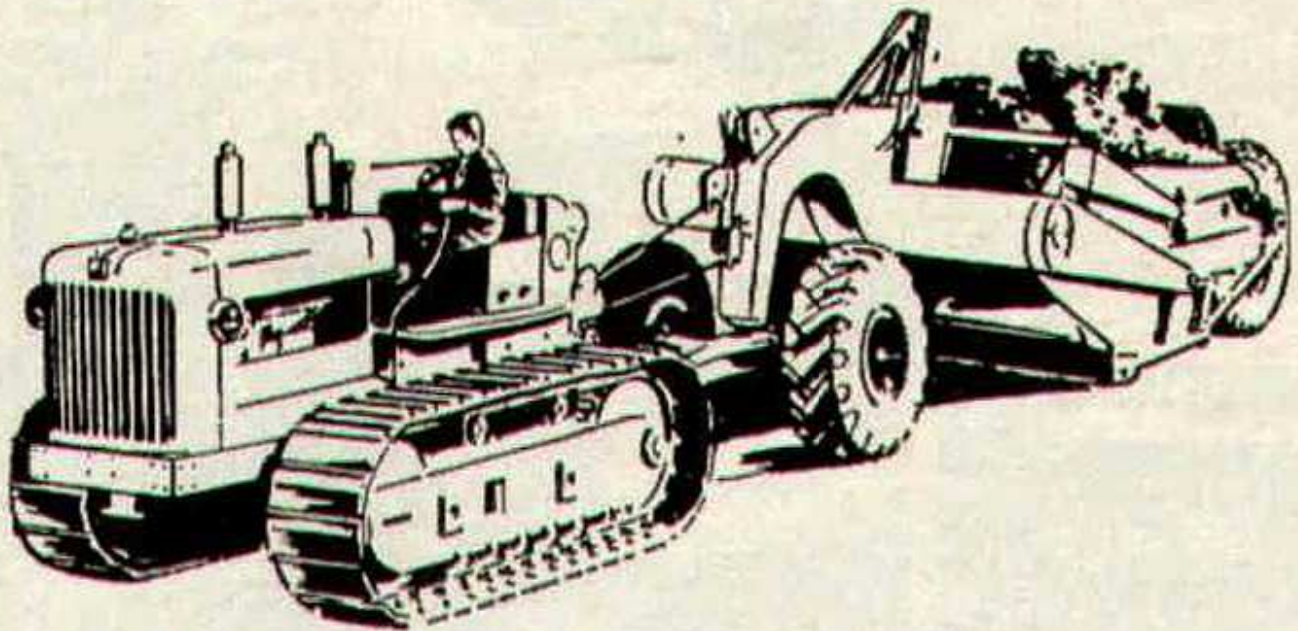


This shot by Willy Penman brought off a great save by the Blackburn Rovers goalkeeper in last Saturdays F.A. Cup-tie. Photo by R. Marsh

H. HIBBERD LTD.

40 NEWPORT STREET, SWINDON

Plant Hire Contractors



FOR YOUR EARTH-MOVING EQUIPMENT

TELEPHONE SWINDON 6125



Mel Nurse leads the Town out for the F.A. Cup-tie against Blackburn Rovers last Saturday.

Photo by R. Marsh

Cecil Green

Artistic Decorations in all its branches

12 Armstrong Street, Swindon, Wilts. Tel. 4593

G. A. STREETLY

Tobacconist and Confectioner

10 BOURNE ROAD - MOREDON - SWINDON

Telephone: 4956

"COAL!"
"COAL!"
"COAL!"

J. WILMER

St. Margaret's Road
Swindon

TELEPHONE 22535

LEESE, ING & CO. LTD.

Mineral Water and Squash Manufacturers

LANSDOWN ROAD - SWINDON

TELEPHONE 22744

DIVISION III

(up to and including Thursday, 1st February, 1968)

	P	W	D	L	F	A	Pts
Torquay United	27	13	8	6	38	33	34
Walsall	27	13	7	7	49	36	33
Bury	27	12	7	8	58	41	31
Oxford United	27	10	10	7	45	37	30
Stockport County	27	12	6	9	34	33	30
Swindon Town	26	10	9	7	41	26	29
Shrewsbury Town	26	10	9	7	39	37	29
Brighton & H.A.	27	9	10	8	31	30	28
Peterborough United	27	12	4	11	44	43	28
Reading	26	12	4	10	39	41	28
Watford	27	11	5	11	44	29	27
Barrow	27	11	5	11	36	32	27
Bournemouth & B.A.	27	10	7	10	30	32	27
Gillingham	27	9	9	9	33	37	27
Oldham Athletic	27	12	2	13	39	39	26
Southport	26	10	5	11	41	42	25
Northampton Town	26	9	7	10	34	38	25
Tranmere Rovers	26	9	6	11	43	46	24
Bristol Rovers	25	9	6	10	35	39	24
Colchester United	26	8	8	10	33	45	24
Orient	24	7	7	10	27	34	21
Mansfield Town	26	7	6	13	32	41	20
Scunthorpe United	27	6	8	13	32	51	20
Grimsby Town	26	6	5	15	28	43	17



British Rail

We can organise your Group Travel—very well too!

As a start . . . you need only ten people to qualify for the Special Group Travel discount (two children count as one adult).

And to go on with . . . there are reduced fares for day outings, single and return; for parties making journeys over a period; and for individuals (minimum) travelling to one particular point for a business meeting or conference.

Ask at your local station or travel agent for full details.

ESTABLISHED 1923

DOBELL SHEARMAN

& CO. LTD.

£10 TYPEWRITERS from £10

Also full selection new standard and portable typewriters
OFFICE EQUIPMENT

29 High Street & 33 Faringdon Road, Swindon.

Tel. 4961/2

Heating Services (C.G.H.) Ltd.

HEATING, PLUMBING & VENTILATING
ENGINEERS

INSTALLATION & REPAIRS

24 HOUR MAINTENANCE SERVICE

28 BUCKINGHAM RD.

Tel. SWINDON 27630

FORTHCOMING MATCHES

SATURDAY, 10th FEBRUARY, 1968

FOOTBALL COMBINATION

BIRMINGHAM CITY

Kick-off 3 p.m.

SATURDAY, 24th FEBRUARY, 1968

DIVISION III

BURY

Kick-off 3 p.m.

TUESDAY, 27th FEBRUARY, 1968

DIVISION III

GRIMSBY TOWN

Kick-off 7.30 p.m.

F. J. ROPER

Devizes Rd.

Swindon

Phone 22341

F. J. ROPER

Cliftonian

38 William St.

Swindon

Phone 3785

Swindon's
Finest

FISH and CHIPS

**CALL ON
YOUR
WAY
HOME**

Menu

**PLAICE
HAKE
COD
SKATE**

**WE SHALL BE
WAITING
TO
SERVE YOU**

F. J. ROPER
High St.
Wootton Bassett

F. J. ROPER
Cross Hayes
Malmesbury

DIVISION III

Date	Opponents	Ground	Result
August 19	Brighton & Hove Albion	15,790 (H)	2—1
22	Newport County (League Cup)	10,870 (H)	1—1
25	Stockport County	9,103 (A)	0—2
29	Newport Co. (League Cup Replay)	6,537 (A)	0—2
September 2	Tranmere Rovers	12,152 (H)	3—1
4	Barrow	7,352 (A)	1—1
9	Orient	4,722 (A)	0—0
16	Northampton Town	13,280 (H)	4—0
23	Walsall	9,132 (A)	2—3
26	Barrow	13,567 (H)	0—1
30	Gillingham	12,983 (H)	2—2
October 4	Reading	17,867 (A)	1—2
7	Bury	8,222 (A)	1—1
14	Bournemouth & B.A.	11,135 (H)	4—0
21	Colchester United	4,907 (A)	1—2
24	Reading	17,229 (H)	5—1
28	Peterborough United	12,215 (H)	0—0
November 4	Mansfield Town	4,619 (A)	2—2
11	Watford	13,327 (H)	2—0
13	Tranmere Rovers	6,519 (A)	2—3
18	Southport	5,008 (A)	1—1
25	Scunthorpe United	11,944 (H)	2—0
December 2	Oldham Athletic	6,965 (A)	2—0
12	(1) Salisbury	12,193 (H)	4—0
16	Brighton & Hove Albion	9,141 (A)	0—0
19	Stockport County	12,856 (H)	2—0
26	Torquay United	12,910 (A)	1—1
30	Torquay United	18,161 (H)	1—0
January 6	(2) Luton Town	18,203 (H)	3—2
20	Northampton Town	10,339 (A)	0—2
27	(3) Blackburn Rovers	20,830 (H)	1—0
February 3	Walsall (H)
10	Gillingham (A)
17	(4) Grimsby Town (Postponed) (H)
24	Bury (H)
March 2	Bournemouth & B.A. (A)
9	(5) Shrewsbury Town (A)
16	Colchester United (H)
23	Peterborough United (A)
30	(6) Mansfield Town (H)
April 6	Watford (A)
12	Oxford United (A)
13	Southport (H)
16	Oxford United (H)
19	Scunthorpe United (A)
23	Bristol Rovers (H)
27	(S.F.) Oldham Athletic (H)
May 4	Bristol Rovers (A)
11	Grimsby Town (A)
18	(Final)

I say!

Do you know?



**It's our 150th ANNIVERSARY this year
WE HAVE BEEN PROVIDING
MAXIMUM SECURITY FOR SAVINGS
FOR 150 YEARS**

**INTEREST 5½% IN THE
SPECIAL INVESTMENT DEPT.**

Local Offices
17 Commercial Road, Swindon.
6 Maryport Street, Devizes.

T RUSTEE

S AVINGS

B ANK

8,000 SEATS FOR SHEFFIELD WEDNESDAY F.C.

7,000 SEATS FOR ASTON VILLA F.C.

6,000 SEATS FOR SHEFFIELD UNITED F.C.

3,500 SEATS FOR LEEDS UNITED F.C.

3,000 SEATS FOR OLDHAM F.C.

4,000 SEATS FOR PETERBOROUGH AGRICULTURAL SOCIETY

13,500 SEATS FOR HULL CITY F.C.

3,200 SEATS FOR COVENTRY CITY F.C.

FAST, EFFICIENT SERVICE FROM MARTYN LYNSHAW LTD.

THE LATEST THING IN STADIUM SEATING

- MANUFACTURED IN HIGH-DENSITY POLYTHENE
- NO MAINTENANCE
- ANY COLOUR
- SEND FOR DETAILS
- LIGHT CONSTRUCTIONAL STEELWORK
- ANCILLARY WORK FOR THE BUILDING TRADE



FAST EFFICIENT SERVICE BY
MARTYN LYNSHAW LIMITED

Telephone
21844

BOUNDARY WORKS - STRATTON ROAD - SWINDON